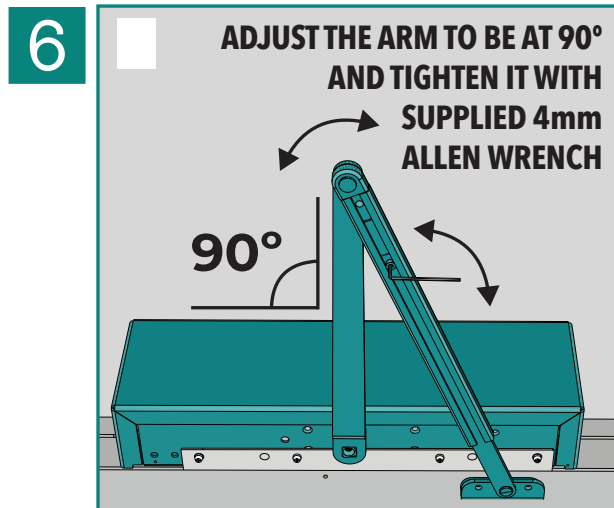
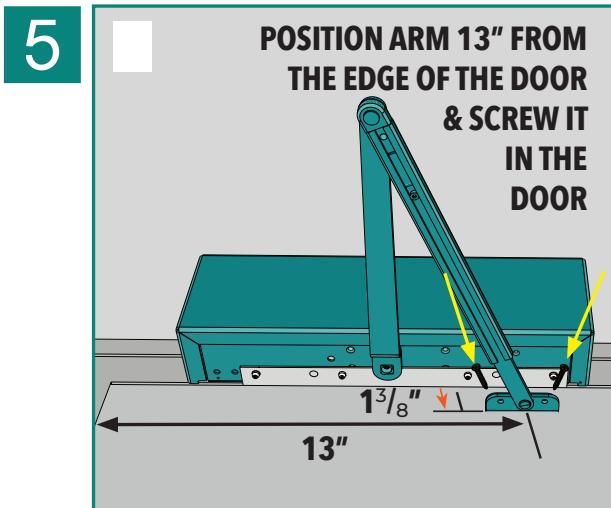
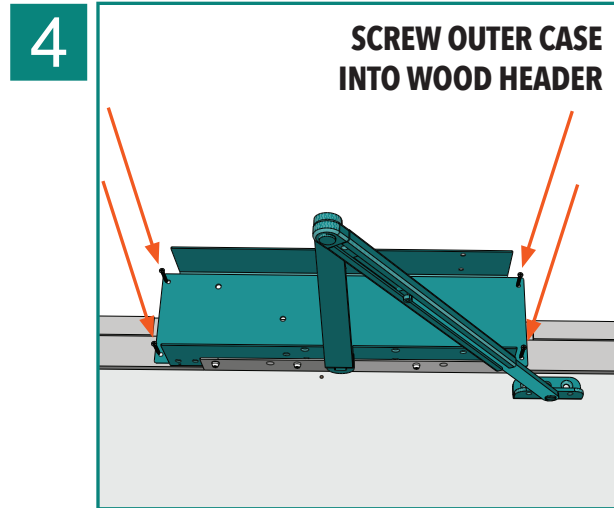
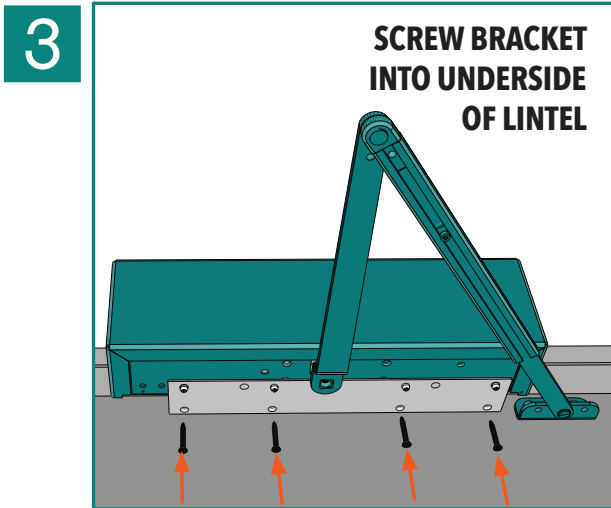
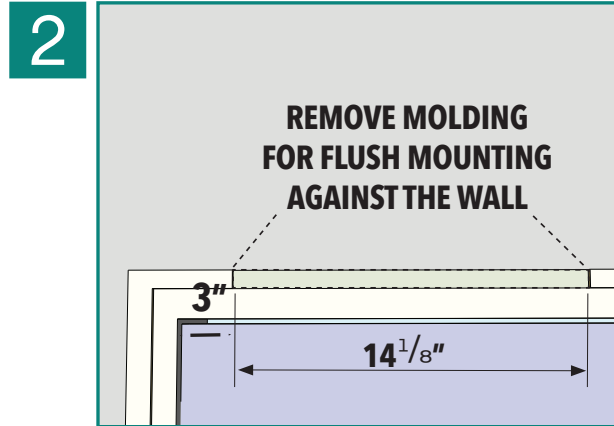


# LINTEL MOUNT INSTALLATION INSTRUCTIONS FOR OUTWARD OPENING DOOR

*\*\*Remove Cover from Operator before beginning installation\*\**



*Note: Position Model 133 at 3" and Model 233 at 4" away from hinges and mount arm at 13" from hinges. Mount arm shoe 1 3/8" down from top of the door. After mounting unit, see page 9 and review instructions on inside cover.*

**LINTEL MOUNT INSTRUCTIONS FOR OUTWARD OPENING DOOR**

MODEL **ALL** PAGE **1 OF 1**